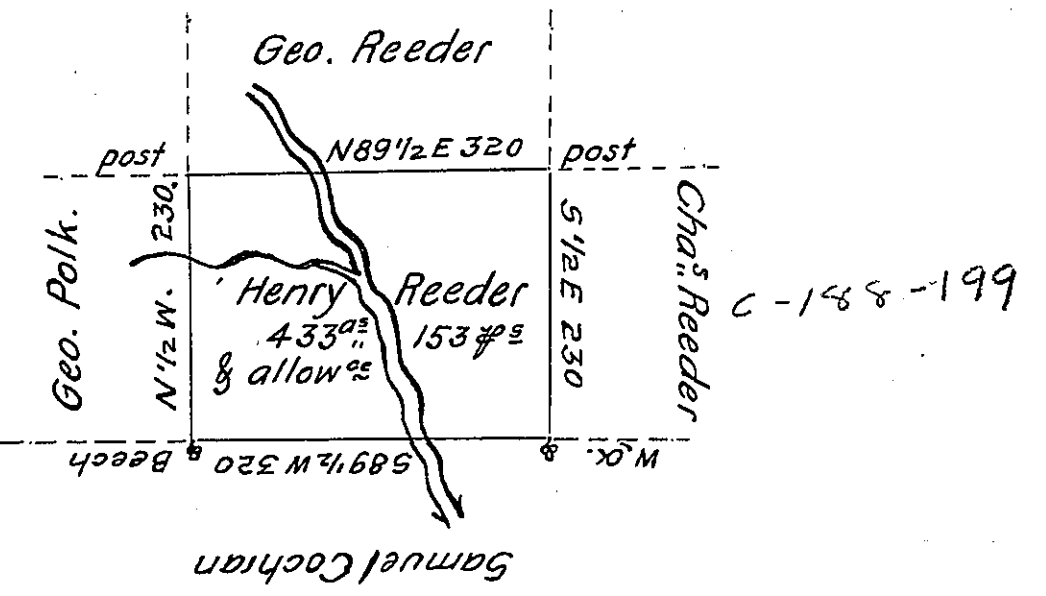


C-194-196



C-148-199

C-18-245

A Draught of a tract of land called \_\_\_\_\_ Situate in the County  
of Luzerne, Adjoining Geo<sup>e</sup>. Polk & others surveyed the 17<sup>th</sup> day of Novem<sup>r</sup>.  
1792. for Henry Reeder in pursuance of a Warrant bearing date the 3<sup>d</sup>. day  
of April 1792 ~ Containing Four hundred thirty three Acres & one hundred &  
fifty three perch<sup>s</sup>. & the allowance of Six  $\frac{1}{2}$  Cent. ~  
To Dan<sup>l</sup>. Brodhead Esq<sup>r</sup>. }  
Surveyor General. } Anty. Grothers D.S.

IN TESTIMONY that the above is a copy of the original remaining on file in  
the Department of Internal Affairs of Pennsylvania, made  
conformably to an Act of Assembly approved the 16th day of  
February, 1833, I have hereunto set my Hand and caused  
the Seal of said Department to be affixed at Harrisburg,  
this twenty-seventh day of August 1906

*Isaac D. Brown*  
Secretary of Internal Affairs.